

# Commissioner District 3 - Central Kitsap Zoning

**Legend**

County Commissioner District Outlines

Regional/Countywide Growth Center

Urban Growth Area Boundary

Incorporated City Boundary

Airport Overlay Area

RR - Rural Residential (1 DU/5 Ac)

Mineral Resource/Rural Residential

RP - Rural Protection (1 DU/10 Ac)

Mineral Resource/Rural Protection

RW - Rural Wooded (1 DU/20 Ac)

Mineral Resource/Rural Wooded

FRL - Forest Resource Lands (1 DU/40 Ac)

Mineral Resource/Forest Resource Lands

BC - Business Center

IND - Industrial

Mineral Resource/Industrial

Commercial (19-60 DU/Ac)

Regional Center (19 DU/Ac - no max)

NC - Neighborhood Commercial (10-30 DU/Ac)

Low Intensity Commercial (10-30 DU/Ac)

RCO - Rural Commercial

RI - Rural Industrial

Greenbelt (1-4 DU/Ac)

UCR - Urban Cluster Residential (5-9 DU/Ac)  
(14 for Single Family attached only)

UR - Urban Restricted (1-5 DU/Ac)

UL - Urban Low Residential (5-9 DU/Ac)  
(14 for Single Family attached only)

Urban Medium Residential (10-30 DU/Ac)

Urban High Residential (19-60 DU/Ac)

KVC - Keyport Village Commercial

KVLR - Keyport Village Low Residential

KVR - Keyport Village Residential

MVC - Manchester Village Commercial

MVLR - Manchester Village Low Residential

MVR - Manchester Village Residential

SVC - Suquamish Village Commercial

SVLR - Suquamish Village Low Residential

SVR - Suquamish Village Residential

Park

CITY - Incorporated City

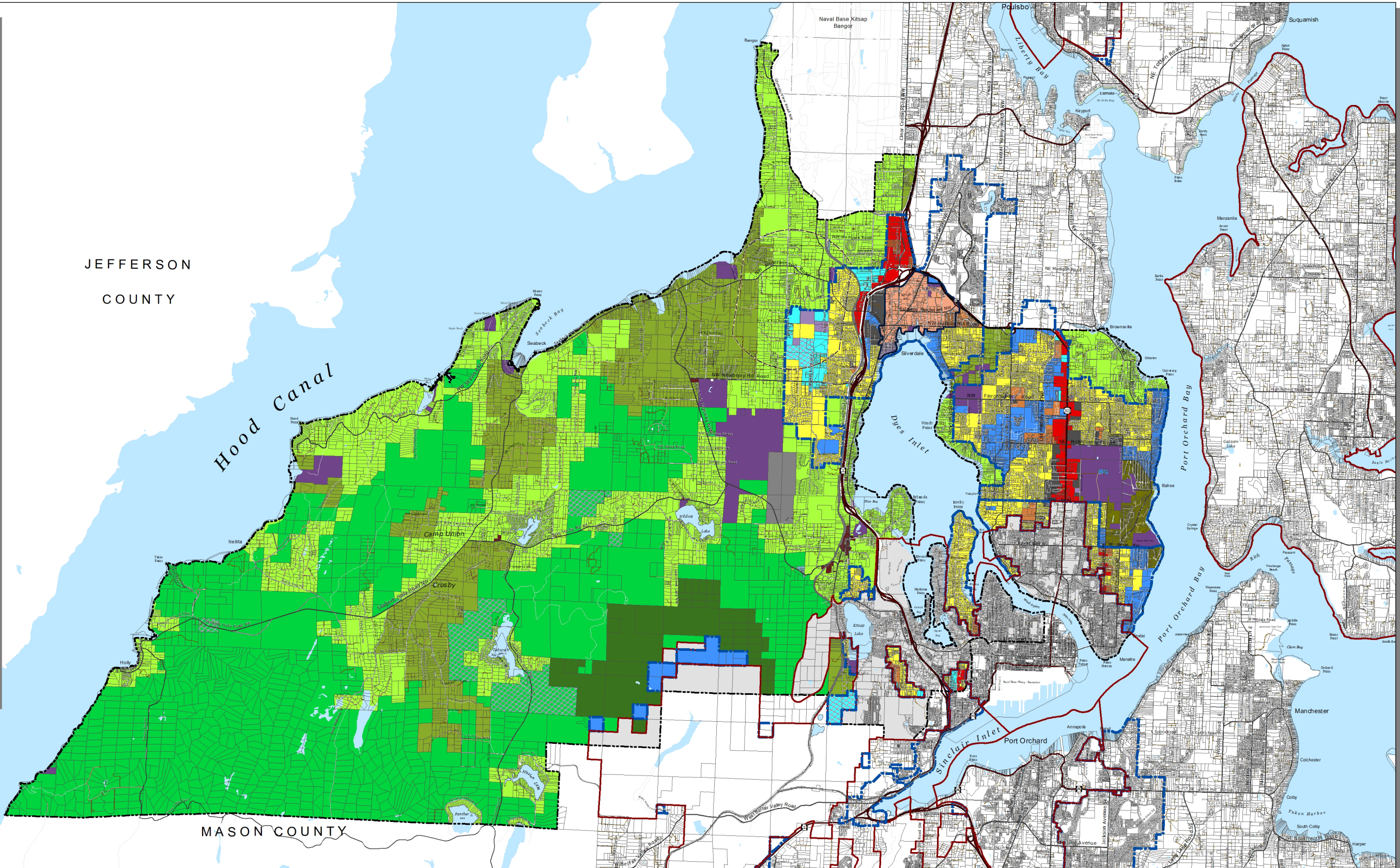
MIL - Military

T - Tribal Land

Lake

Salt Water

RL - Residential Low



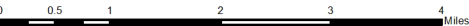
This map was created from existing map sources, not from field surveys. Determination of fitness for use lies with the user, as does the responsibility for understanding the accuracy and limitations of this map and data.

The information on this map may have been collected from various sources and can change over time without notice.

While great care was taken in making this map, there is no guarantee or warranty of its accuracy as to labeling, placement or location of any geographic features present. This map is intended for informational purposes only and is not a substitute for a field survey.

Kitsap County and its officials and employees assume no responsibility or legal liability for the accuracy, completeness, reliability, or timeliness of any information on this map.

Map Published Date: April, 2024



## Preferred Alternative - Board of Commissioner Direction



Kitsap County Department of Community Development  
614 Division Street, MS-36, Port Orchard, Washington 98366  
VOICE (360) 337-5777 (Kitsap One) \* <https://www.kitsapgov.com/>

